

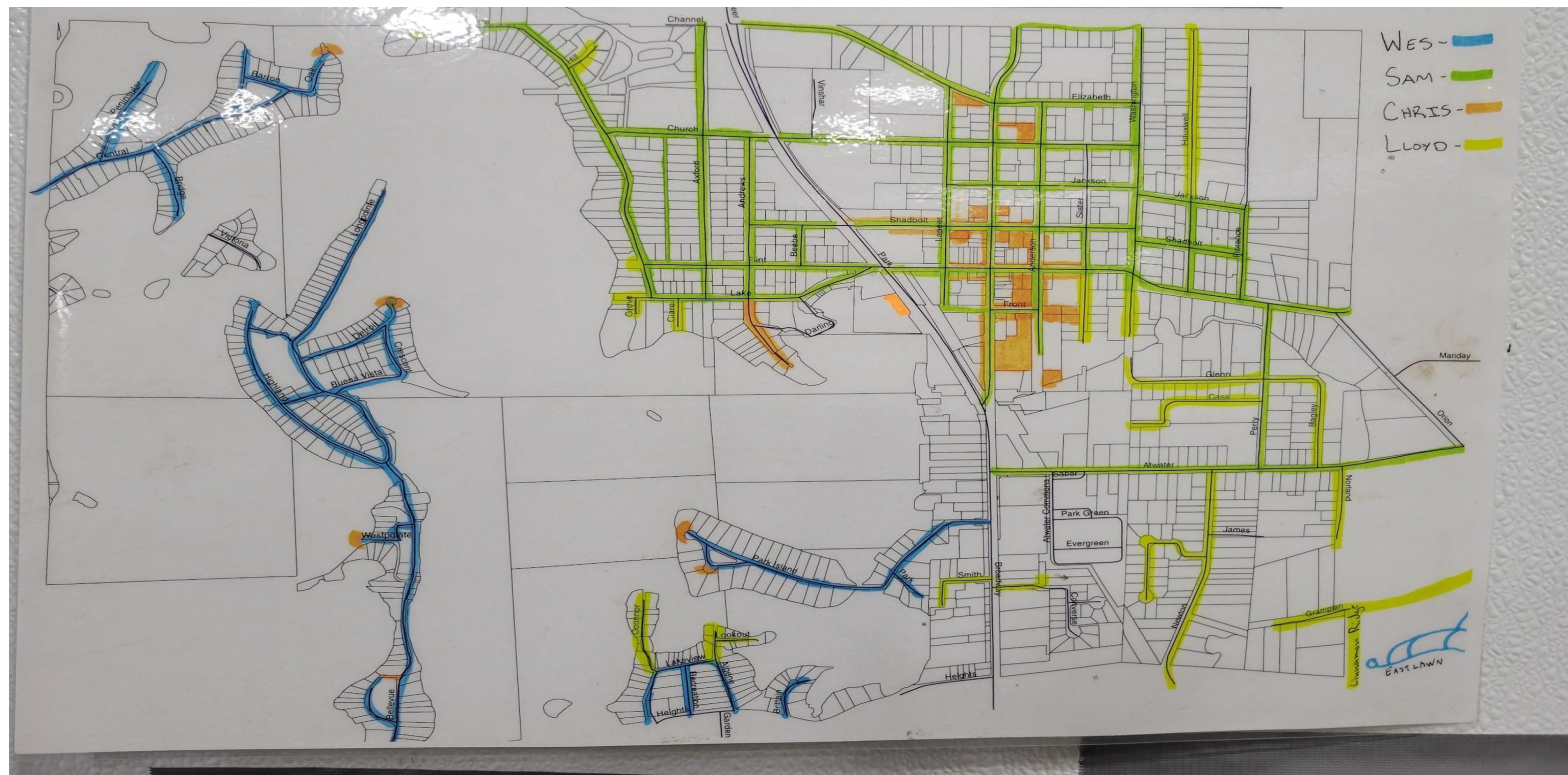


Village of Lake Orion snow plowing procedure

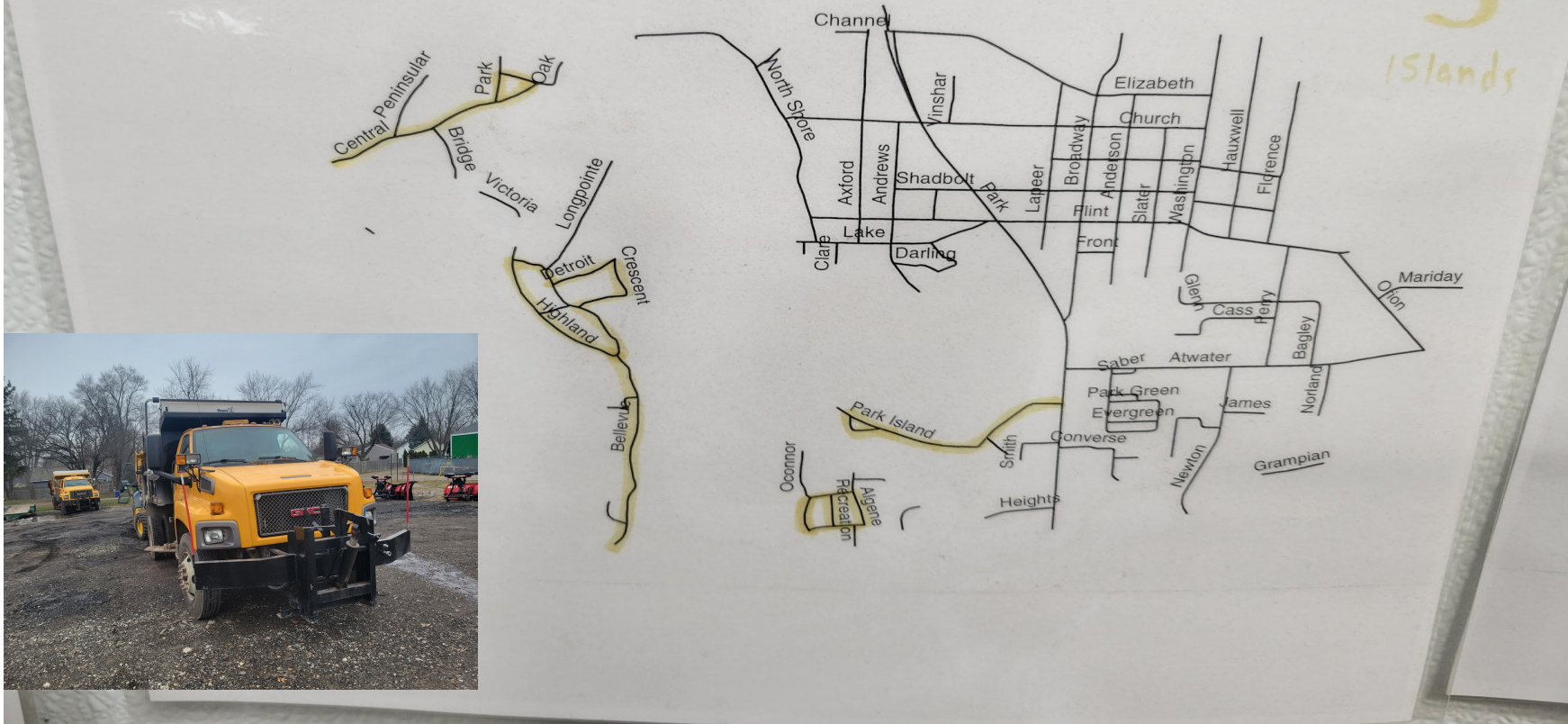
Lake Orion DPW

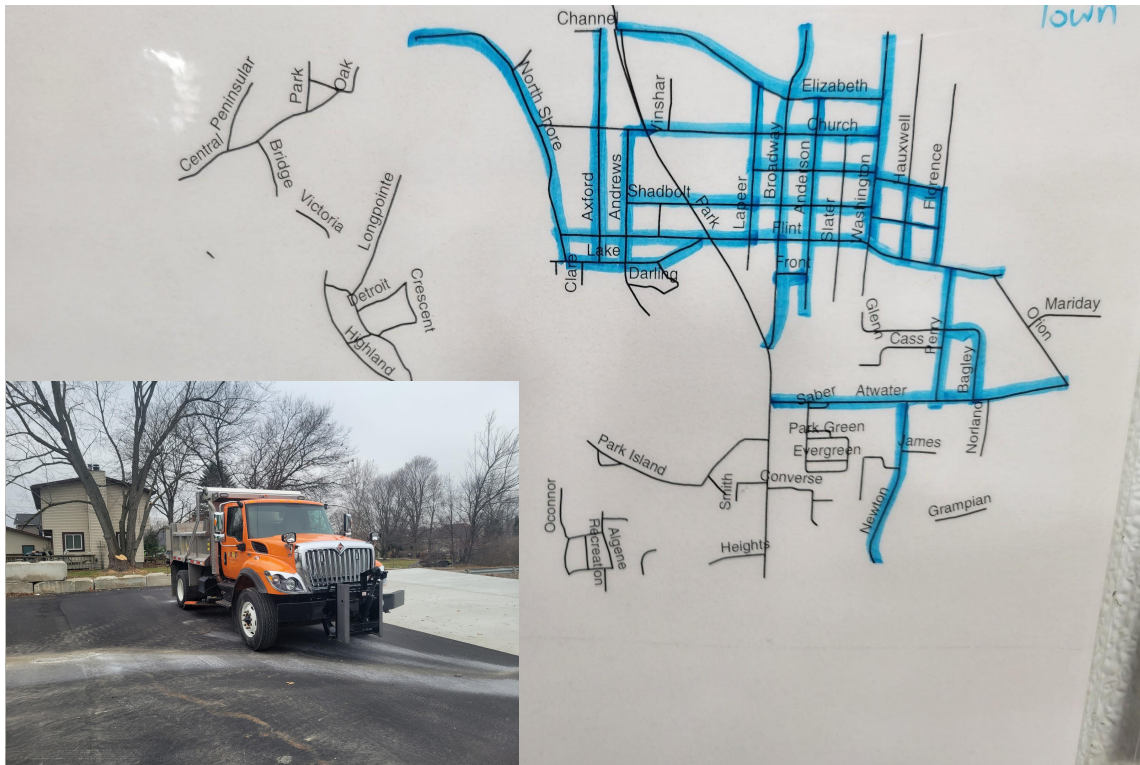


Snow plow routes



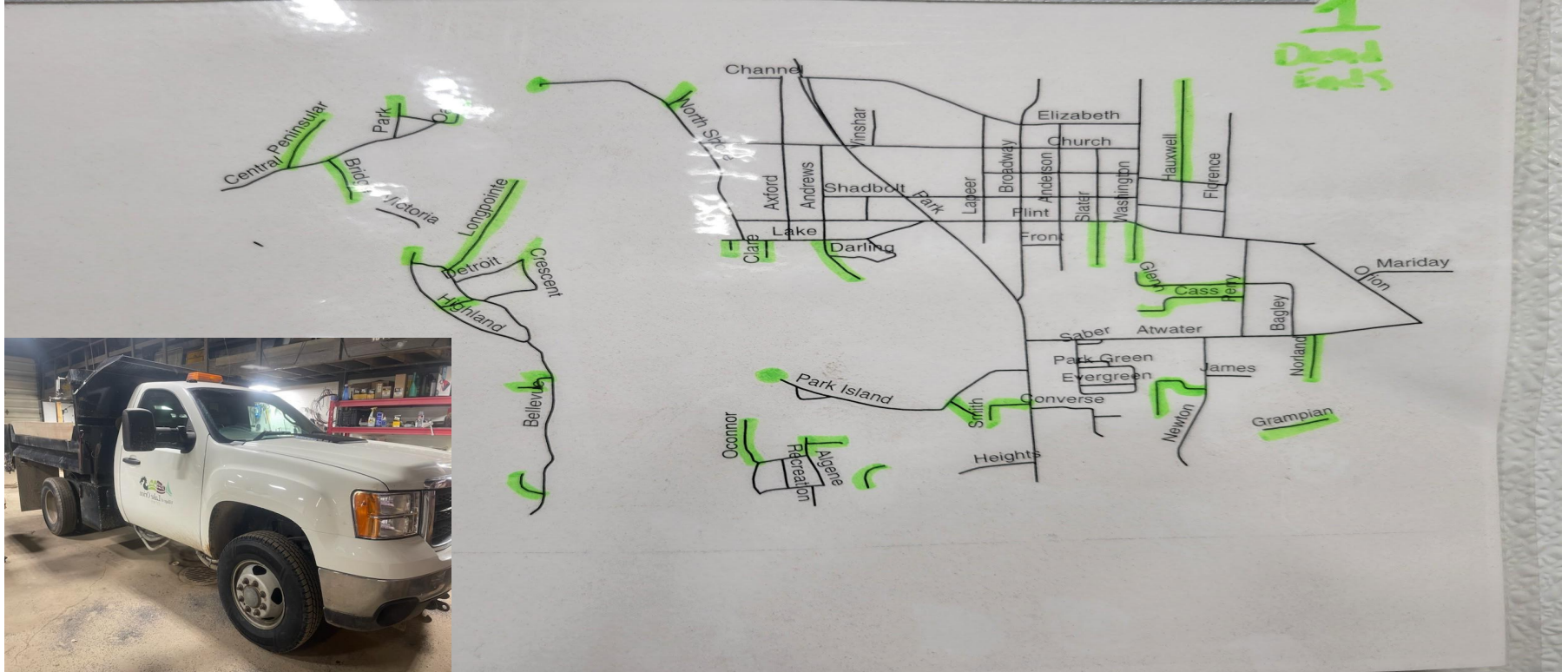
Islands



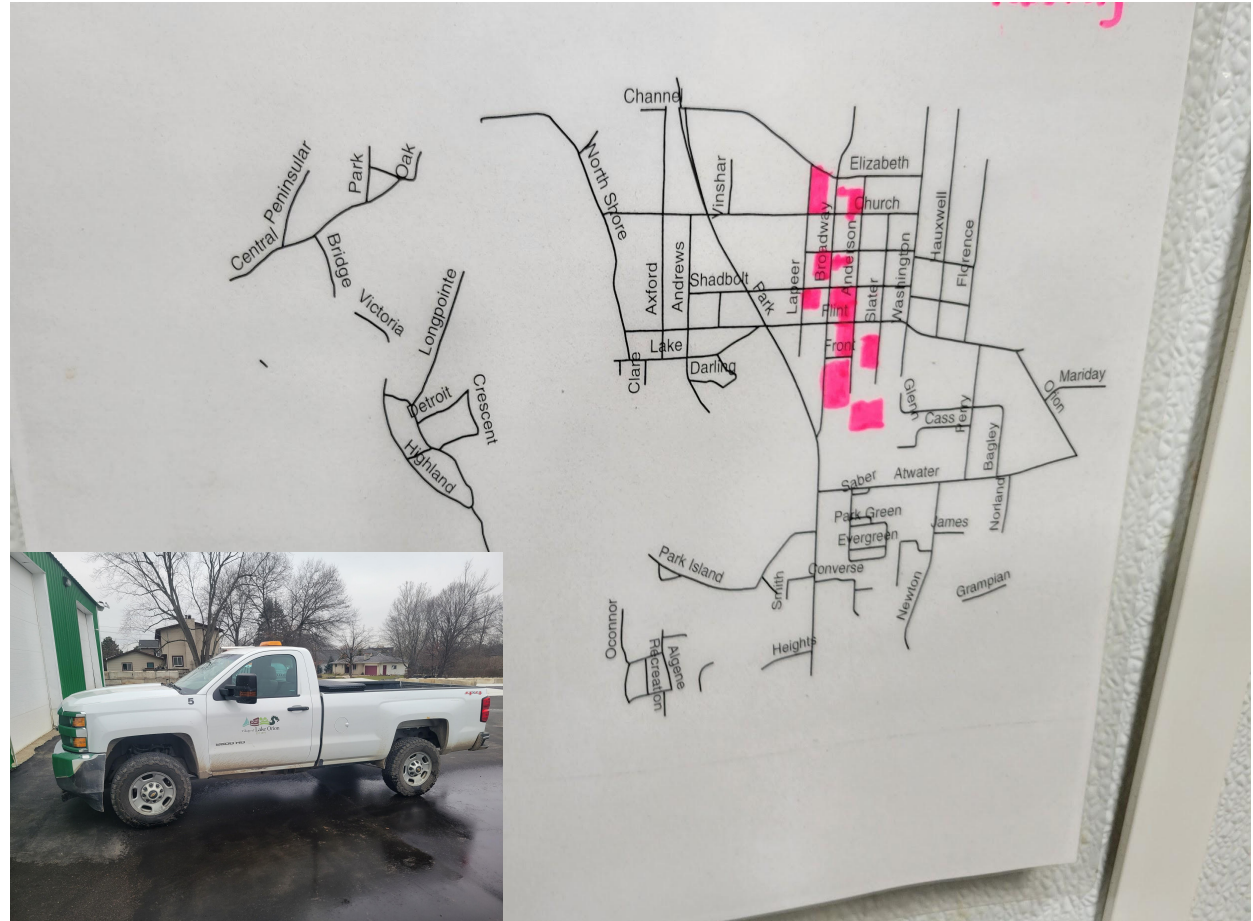


Main Village

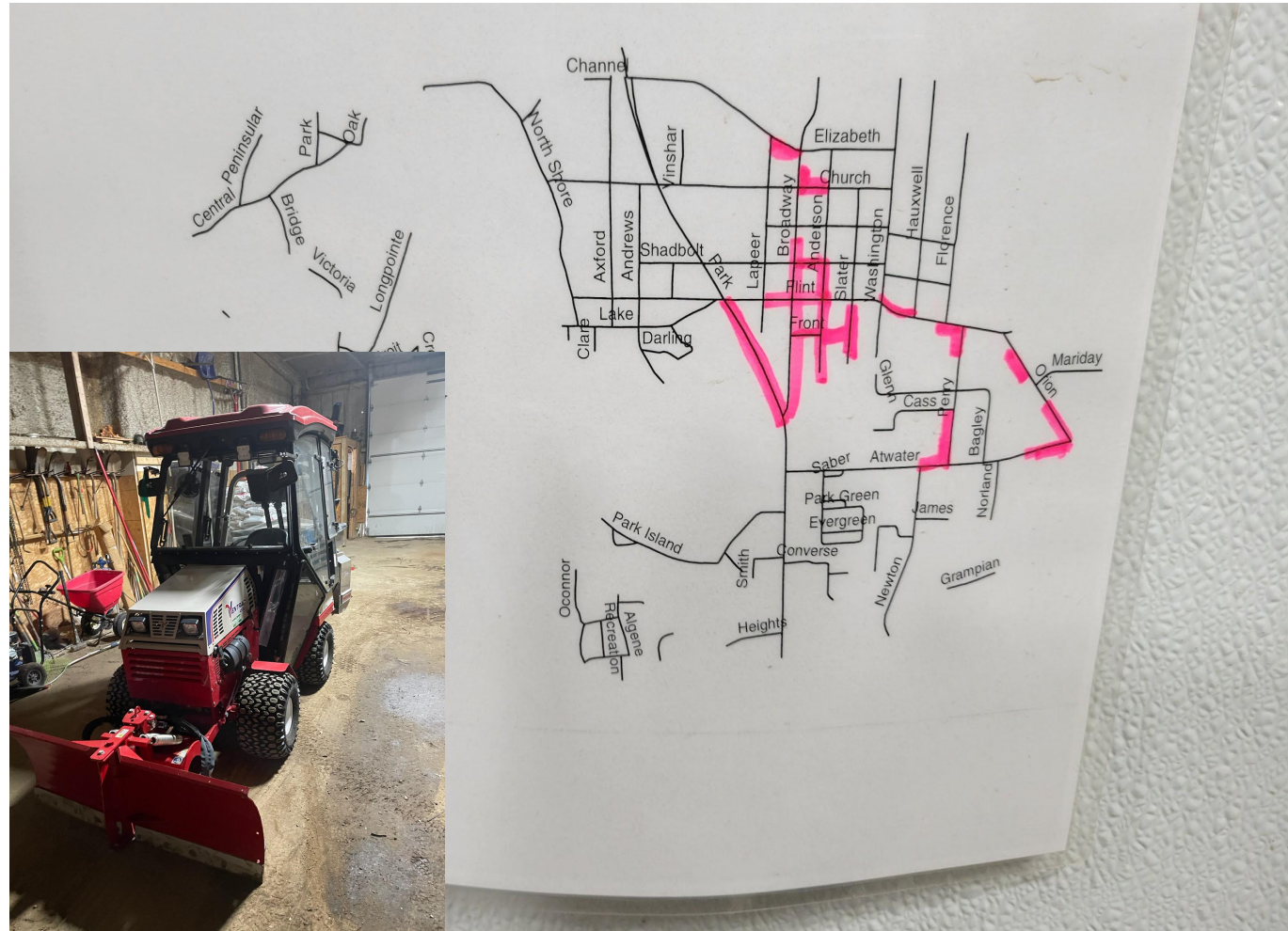
Dead Ends



Parking Lots

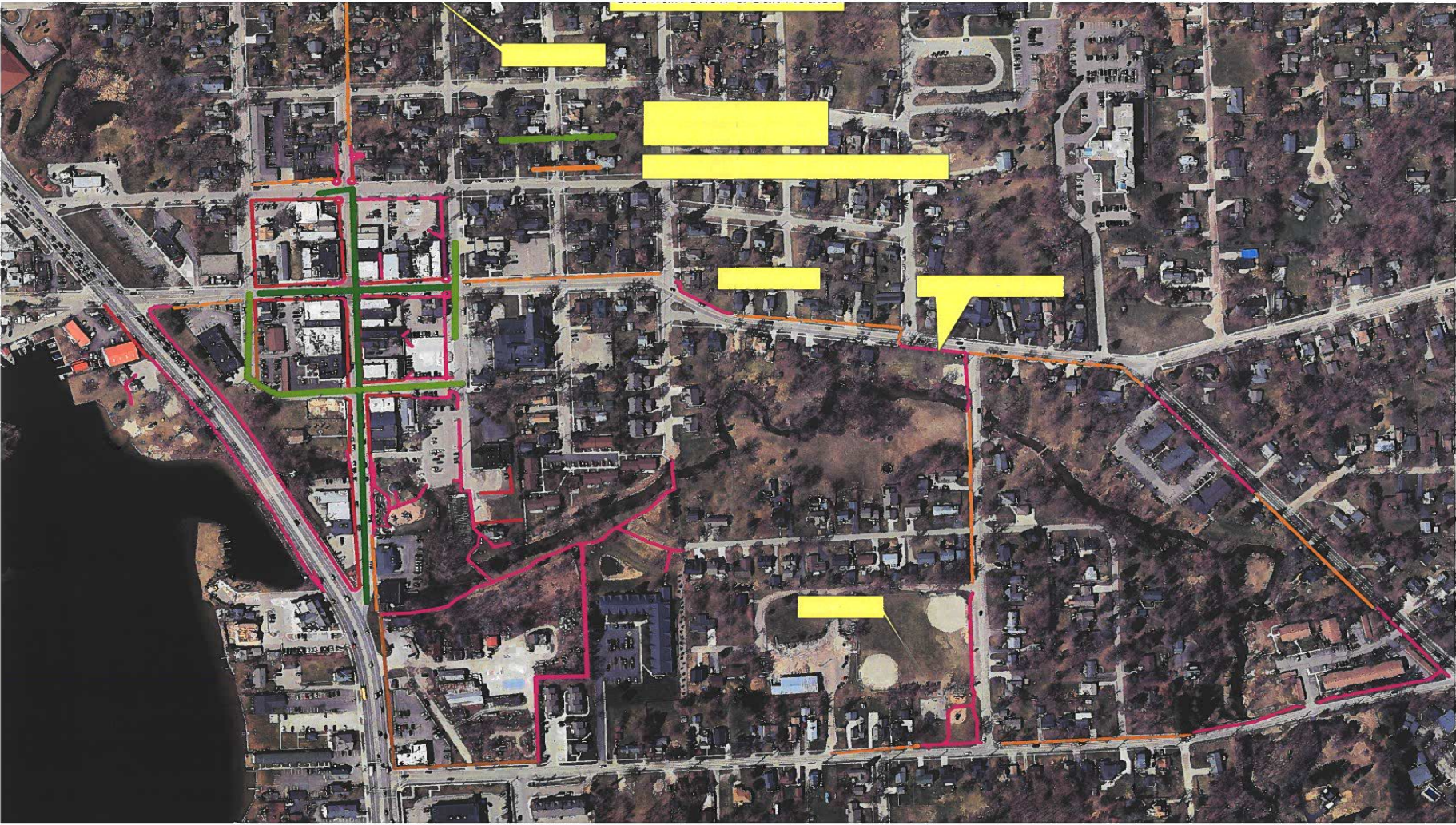


Sidewalks





Sidewalk satellite view



Snow/Ice Control Call In Protocol

The following is the protocol Police Officers and Dispatchers should use when calling DPW employees in to plow streets after normal working hours. This policy does not reflect the same measures that will be taken to remove snow and ice during normal working hours. During normal working hours, streets may be cleared more often and sooner than after hour situations. This policy should be used as general guidelines for Police Officers and Dispatchers in unison with their own judgment of road conditions.

The DPW knows that different conditions warrant different actions. This policy is designed to make plowing and salting operations more efficient. The DPW will utilize this policy as well as snowfall forecast to determine the best plan of action to take at different times of the day. The DPW will make every effort to keep the roads clear for safe passage at all times.

Snowfall w/accumulation –

- There should be a minimum of **TWO** inches of snow accumulation before DPW staff is called to plow streets.
- DPW staff should only be called if the minimum snow accumulation is reached and the roads have become unsafe to travel (slippery enough that drivers cannot maintain control of their vehicles). If you cannot do the speed limit safely, the DPW should be contacted.
- The Priority plowing/salting route includes Major Streets and roads with hills.. This route will be done when there is **TWO** inches or more of snow accumulation.
- The Secondary plowing/salting route includes all local streets less traveled. If called in to plow, these will only be done with accumulation over **THREE** inches where roads are unsafe.
- During a large snow storm, we will maintain the priority route but may not maintain the secondary route until normal working hours or until the snow storm is finished.
- After two or more resident complaints are made regarding the condition of streets, please contact the DPW foreman on-call immediately so he may act appropriately.

Ice-

- DPW staff should be called out whenever roads become too icy for travel and have the potential to cause motor vehicle accidents.
- This includes small snowfalls that turn to ice quickly and black ice.
- DPW may elect to do all streets at this time or do the priority route only.
- Please be advised, salt is not effective in temperatures below 25°-20° F thus DPW staff may make the determination not to utilize salt until the temperatures recover to levels above 25° F.

Notice: Business Owners Downtown

Starting this year 2021/2022 winter season the DPW will begin maintaining snow and ice on the downtown sidewalks. This does not mean that every flurry or dusting will be plowed and salted by the DPW. The DPW will maintain sidewalks when the snow totals reach 2 inches or more. Any snowfall under 2 inches will be the responsibility of the business owner. The DPW will also monitor and respond to any ice storms we may have and salt accordingly.

